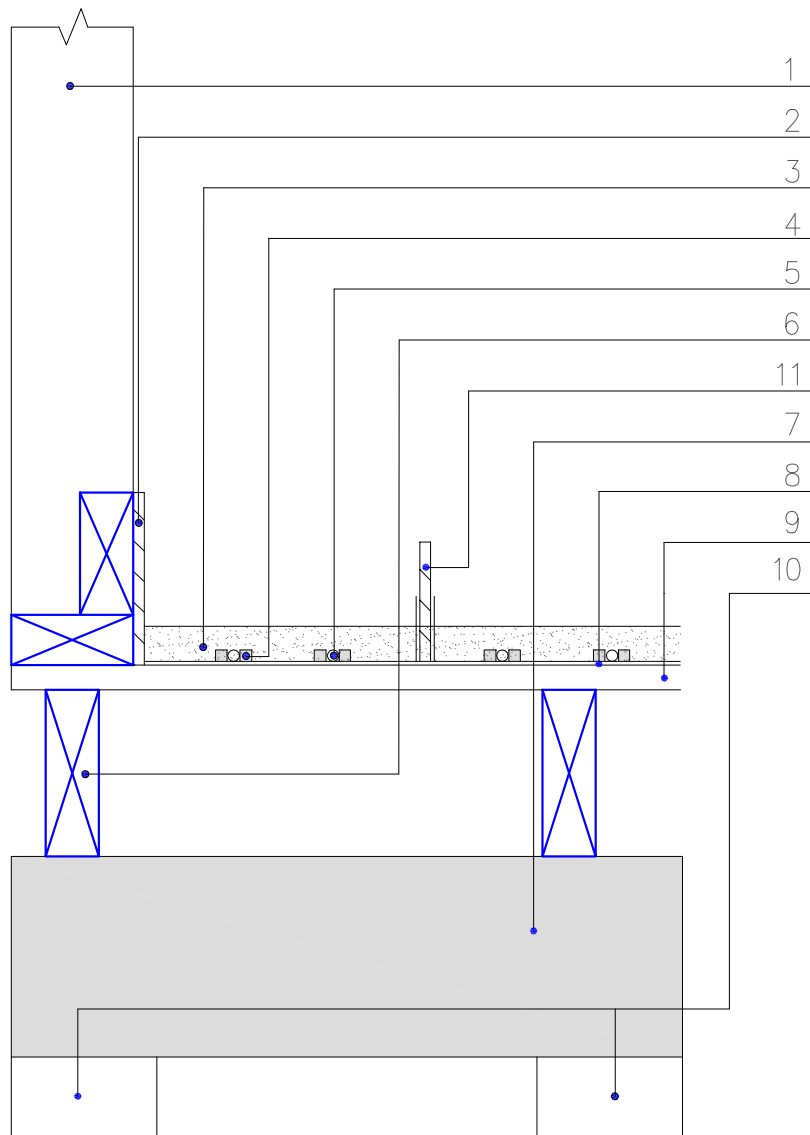


Control Joint in EM 4193 timber floor



- | | | | |
|---|--|----|---|
| 1 | Timber wall | 7 | Timber bearer |
| 2 | Edge expansion strip
fixes to all walls | 8 | Existing timber floor – must be
sound and no rot |
| 3 | 4193 screed min. 26mm thick | 9 | Slipbarrier over existing
timber floor |
| 4 | Pipe positioning panel | 10 | Timber pile |
| 5 | 16mm UFH pipe | 11 | Edge expansion strip made
into a control joint |
| 6 | Timber floor joists | | |