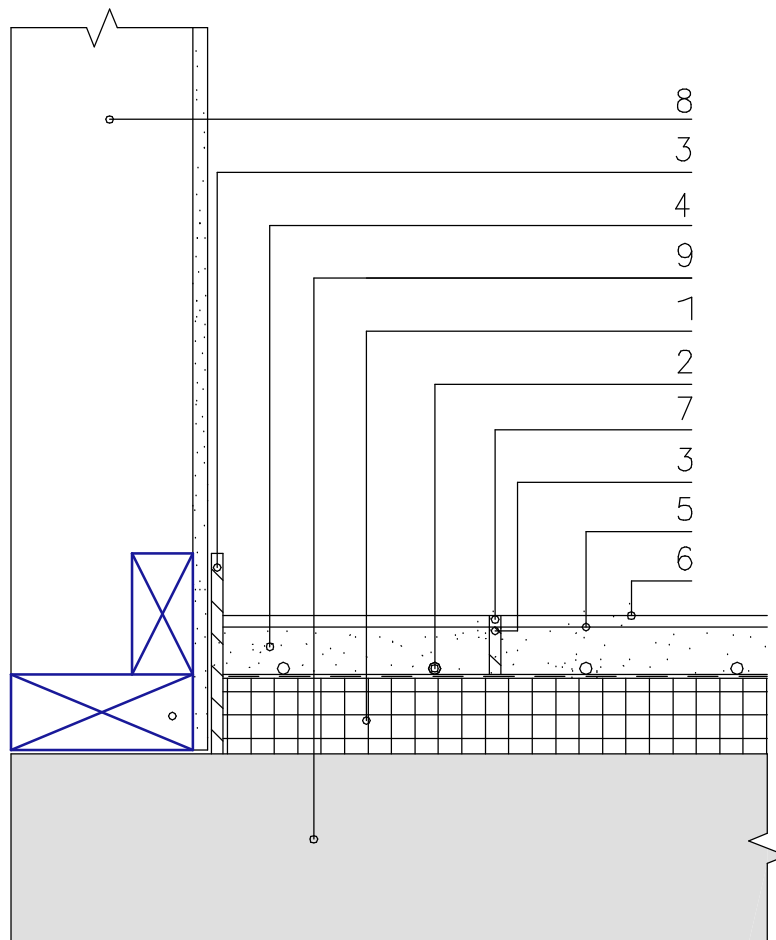


EM 490 Control Joint Detail with EM 4610



- | | | | |
|---|---|---|---|
| 1 | Insulation Board | 6 | 4610 5–8mm thick
(polished when dry) |
| 2 | UFH water pipe | 7 | Control joint in 490 screed must
be followed in 4610 screed–fill
control joint with coloured MS |
| 3 | Edge expansion strip | 8 | Timber wall |
| 4 | 490 screed – min 51mm thick | 9 | Concrete floor |
| 5 | 2 coats 4716 Primer after
490 is fully cured | | |